

PARCC Results: Spring 2018 Administrations

Ho-Ho-Kus Public School
October 2, 2018



Measuring
College and
Career
Readiness

NEW JERSEY'S STATEWIDE ASSESSMENT PROGRAM

Assessment	Students
■ PARCC English Language Arts and Literacy	■ All students Grades 3 – 8
■ PARCC Mathematics*	■ All students Grades 3 – 8
■ NJSLA-S (Science)	■ 5th and 8th grade students
■ WIDA	■ English Language Learners

*Note:

■ 8th grade Algebra students took PARCC Mathematics Algebra 1.

PARCC PERFORMANCE LEVELS

- Level 1: Not yet meeting grade-level expectations
- Level 2: Partially meeting grade-level expectations
- Level 3: Approaching grade-level expectations
- Level 4: Meeting grade-level expectations
- Level 5: Exceeding grade-level expectations

ELA PARCC Results 2018 (Performance distribution by %)

Grade	Not Mtg Level 1	Partially Level 2	App Level 3	Meeting Level 4	Exceeding Level 5
3	2%	2%	17%	57%	22%
4	0%	0%	6%	39%	55%
5	0%	3%	4%	70%	23%
6	1%	0%	7%	57%	34%
7	0%	0%	9%	29%	62%
8	0%	0%	7%	52%	40%

Math PARCC Results 2018

Grade	Not Mtg Level 1	Partially Level 2	App Level 3	Meeting Level 4	Exceeding Level 5
3	0%	2%	11%	46%	41%
4	0%	0%	9%	55%	36%
5	0%	3%	4%	65%	28%
6	0%	6%	16%	67%	12%
7	1%	1%	15%	68%	15%
8	2%	19%	16%	63%	0%
ALG	0%	3%	8%	67%	23%

Comparison of **Ho-Ho-Kus to State**
English Language Arts/Literacy to New Jersey
Percentages for 2018

Grade	Level 1 HHK	Level 1 State	Level 2 HHK	Level 2 State	Level 3 HHK	Level 3 State	Level 4 HHK	Level 4 State	Level 5 HHK	Level 5 State
3	2	13.5	2	13.5	17	21.4	57	43.5	22	8.1
4	0	7.6	0	12.3	6	22.1	39	39.1	55	18.9
5	0	6.9	3	12.6	4	22.4	70	47.2	23	10.8
6	1	6.2	0	13.6	7	24.0	57	41.3	34	14.9
7	0	8.6	0	10.2	9	18.5	29	34.1	62	28.6
8	0	8.7	0	11.1	7	19.8	52	39.9	40	20.4

Comparison of **Ho-Ho-Kus to State**
 Spring 2018 PARCC Administrations
 Mathematics to New Jersey - **Percentages** for 2018

Grade	Level 1 HHK	Level 1 State	Level 2 HHK	Level 2 State	Level 3 HHK	Level 3 State	Level 4 HHK	Level 4 State	Level 5 HHK	Level 5 State
3	0	8.0	2	15.3	11	23.7	46	37.8	41	15.2
4	0	7.5	0	16.8	9	26.3	55	41.8	36	7.6
5	0	7.5	3	17.0	4	26.7	65	38.5	28	10.4
6	0	8.5	6	20.1	16	27.9	67	35.6	12	7.9
7	1	7.7	1	20.4	15	28.6	68	36.0	15	7.4
8*	2	22.0	19	22.7	16	27.1	63	27.2	0	1.0
Algebra I	0	11.3	3	18.6	8	24.3	67	39.3	23	6.5

Comparison of 2016, 2017, 2018 PARCC Administrations English Language Arts/Literacy - Percentages

Grade	Level 1 2016	Level 1 2017	Level 1 2018	Level 2 2016	Level 2 2017	Level 2 2018	Level 3 2016	Level 3 2017	Level 3 2018	Level 4 2016	Level 4 2017	Level 4 2018	Level 5 2016	Level 5 2017	Level 5 2018
3	3	0	2%	3	1	2%	10	13	17%	67	63	57%	17	23	22%
4	0	0	0%	0	3	0%	14	2	6%	59	56	39%	27	40	55%
5	1	0	0%	3	2	3%	14	5	4%	65	84	70%	17	10	23%
6	0	0	1%	0	5	0%	11	11	7%	60	46	57%	29	39	34%
7	0	0	0%	3	0	0%	11	9	9%	42	32	29%	44	60	62%
8	0	3	0%	6	6	0%	15	16	7%	47	43	52%	32	33	40%

Comparison 2016, 2017 & 2018 PARCC Administrations

Mathematics - Percentages

Grade	Level 1 2016	Level 1 2017	Level 1 2018	Level 2 2016	Level 2 2017	Level 2 2018	Level 3 2016	Level 3 2017	Level 3 2018	Level 4 2016	Level 4 2017	Level 4 2018	Level 5 2016	Level 5 2017	Level 5 2018
3	0	0	0%	3	1	2%	6	11	11%	59	46	46%	32	42	41%
4	0	0	0%	1	4	0%	6	0	9%	85	71	55%	8	25	36%
5	0		0%	3	0	3%	21	13	4%	58	71	65%	18	16	28%
6	1	2	0%	8	3	6%	29	21	16%	48	61	67%	14	14	12%
7	0	0	1%	10	10	1%	24	22	15%	52	56	68%	14	12	15%
8*	0	0	2%	21	16	19%	26	25	16%	53	59	63%	0	0	0%
ALG I	0	0	0%	0	0	3%	0	0	8%	76	76	67%	24	24	23%

ELA Level Comparison 2016-2018

Grade	Change in Level 1		Change in Level 2		Change in Level 4		Change in Level 5	
	2016	2018	2016	2018	2016	2018	2016	2018
3	3	2	3	2	67	57	17	22
4	0	0	0	0	59	39	27	55
5	1	0	3	3	65	70	17	23
6	0	1	0	0	60	57	29	34
7	0	0	3	0	42	29	44	62
8	0	0	6	0	47	52	32	40

Mathematics Level Comparison 2016-2018

Grade	Change in Level 1		Change in Level 2		Change in Level 4		Change in Level 5	
	2016	2018	2016	2018	2016	2018	2016	2018
3	0	0	3	2	59	46	32	41
4	0	0	1	0	85	55	8	36
5	0	0	3	3	58	65	18	28
6	1	0	8	6	48	67	14	12
7	0	1	10	1	52	68	14	15
8	0	2	21	19	53	63	0	0
ALG	0	0	0	3	76	67	24	23

2018 SPRING PARCC ADMINISTRATION
SPECIAL EDUCATION
ENGLISH LANGUAGE ARTS/LITERACY

Grade	Not Yet Meeting (Level 1)	Partially Meeting (Level 2)	Approaching Expectations (Level 3)	Meeting Expectations (Level 4)	Exceeding Expectation (Level 5)
3	1	1	3	5	1
4	0	0	4	9	5
5	0	2	2	4	0
6	1	0	2	5	2
7	0	0	3	5	2
8	0	0	1	11	0

* Numbers represent number of students.

2018 SPRING PARCC ADMINISTRATION
SPECIAL EDUCATION
Mathematics

Grade	Not Yet Meeting (Level 1)	Partially Meeting (Level 2)	Approaching Expectations (Level 3)	Meeting Expectations (Level 4)	Exceeding Expectation (Level 5)
3	0	0	4	6	1
4	0	0	4	9	5
5	0	2	2	4	0
6	0	3	2	5	0
7	1	1	3	5	0
8	1	5	4	2	0

* Numbers represent number of students.

Tracking Student Cohorts

Grade	2015	2016	2017	2018
3				
ELA	776	780	784	782
Math	764	775	784	782
4				
ELA	778	775	785	789
Math	767	772	784	785
5				
ELA	771	776	774	782
Math	758	767	768	777
6				
ELA	771	777	781	778
Math	757	758	764	765
7				
ELA	783	780	790	795
Math	760	760	759	766
8				
ELA	778	777	775	788
Math	739	749	754 (789-ALG)	750 (Alg 788)

Comparison of Number of Testing Refusals 2015, 2016, 2017 & 2018 PARCC Administrations

Refusals				
	2015	2016	2017	2018
Grade 3	1	1	0	1
Grade 4	1	0	0	0
Grade 5	4	0	0	0
Grade 6	0	0	0	0
Grade 7	2	0	0	0
Grade 8	11	0	0	0
TOTAL	19	1	0	1

NJSLA-S

- 2018 was a Field Test
- No results this year
- Assessment will be administered again this school
- Results will be reported for the first time in 2019

ACCESS For ELLs

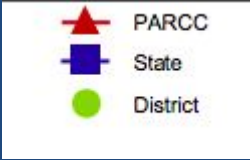
- English language proficiency assessment administered to Kindergarten through 12th grade students who have been identified as English language learners (ELLs).
- Given annually to monitor students' progress in acquiring academic English.
- Assesses each of the four language domains of *Listening, Speaking, Reading, and Writing*.
- *Must average a 4.5 or better to be dismissed from ELL program*

Proficiency Level
1- Entering
2. Emerging
3- Developing
4- Expanding
5- Bridging
6- Reaching

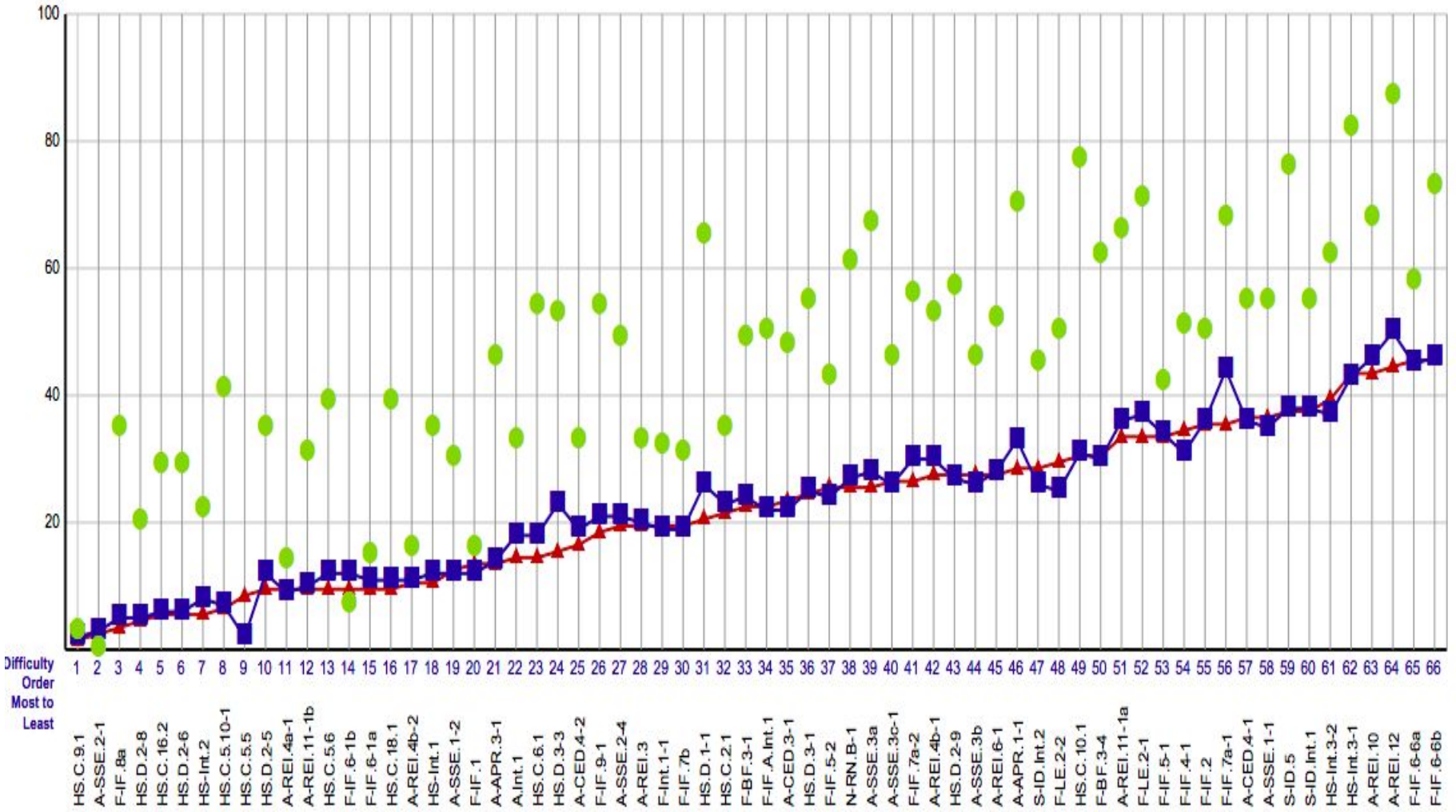
Curricular Connection

- Test preparation is embedded in curriculum
- Examination of best practices through articulation and professional development
 - Within content
 - Instructional strategies
- ELA instruction is incorporated into every subject
 - Math is language based
- Tech classes starting in primary grades

Data Reports



Purpose: This report presents the average percent correct by item for district, state and PARCC.



QUESTIONS TO GUIDE PARCC DATA REFLECTION

- How will we use PARCC data to identify strengths and gaps that exist in our curriculum and instruction?
- How will we use PARCC data as a tool to address areas in need of improvement or enhancement?
- How can we provide additional resources and support for our educators to meet the learning needs of all our students?

Observations After Analysis/Actions

Analysis/Observation	Action
Multiple responses - students only gave one response OR only one response was correct; student receives no credit (ELA and Math)	<ul style="list-style-type: none">● Use of Linkit Assessments that have similar PARCC questions and format● Teachers will simulate these types of questions
Scores in math were slightly lower - year to year and in cohort	<ul style="list-style-type: none">● Connected Math PD● Target in observations

Observations After Analysis/Actions

Ongoing supports:

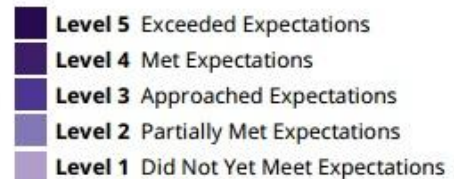
- Review Linkit Benchmarks (min 3x a year);
develop timeline for student progress
- Analyze data/strands
- Team meeting discussions
- AimsWeb in Grades K- 4 and 5- 8 students at risk

RESOURCES FOR PARENTS

- Information on PARCC Student Reports: www.state.nj.us/education/assessment/parcc/scores/
- Understanding the student score reports (with translations): understandthescore.org/
- Sample Test Questions <https://parcc.pearson.com/practice-tests/>

How Did xxxx Perform Overall?

Performance Level 3



Grades 6, 7, & 8

ELA

April 23, 24, 25

Math

April 26, 29,30

Grades 3, 4, & 5

ELA

May 1, 2, 3

Math

Grade 5– May 6, 7, 8

Grade 3 & 4 - May 6, 7, 8, 9



NJSLA- Science

Grades 5 & 8

May 14 & 15

4 Units - 2 units a day

Total testing time each day will be
1 hour for 5th and 1.5 hours for 8th.

Make-ups

Every effort will be made to have students make up any missed tests the week following their testing session, or make up week 5/13.